

Specification of solar garden light



1. Solar energy is a kind of green renewable and clean energy that is pollution-free, noise-free, inexhaustible and inexhaustible. When the solar panel receives sunlight, it can generate photovoltaic effect to generate electric energy, and the controller stores the electric energy into the battery.
2. Night battery discharge lights LED light source, charging night use, one-time investment, multi-year benefits
3. The company's patented product adopts the integrated design of A-type Sanyuanli battery pack and lamp body controller.
4. Fully automatic intelligent light control, time control, remote control function, charging during the day and automatically lighting at night
5. It adopts one-piece aluminum casing, imported high-efficiency light source, full power solar panel, anti-corrosion, waterproof and lightning protection.
6. This product is specially designed for outdoor outdoor lighting, easy to install. , Solar power supply, no wiring,
7. Suitable roads lights, park lights, courtyard lighting, channel lighting, farms, etc.
8. This product solar panel energy efficiency conversion rate of 18% or more, normal sunshine charging more than 8 hours, can supply 3-4 rainy days, Evening (12 hours per night). High temperature resistance 80 degrees, low temperature resistance minus 20 degrees



High efficient monocrystal solar panel



Green energy no need extra power



Smart auto-control



High bright LED source



High capacity li-ion battery for energy storage

Product specification

Specification		
Lamp Power	30W	
Solar panel LED chip	Max Power	18V/50W (High-efficiency monocrystalline solar panel)
	Lifespan	25 years
Battery Product size	Model	3.2V 18AH Lithium battery
	Life span	5-6 yeas
Led chips	Quantity	200 pcs
	Chip brand	Philips SMD 3030
	Lumen	200lm/W
	Lifespan	50000 Hours
Lamp body material	Aluminium alloy	
Lamp size	Φ 540*H340mm	
Charging time	6 hours of effectively sun light	
Working time	Light 10 to 12 hours every day, sustainable 3-7rainy day	
Switching mode	time control + light sensor control	
Install distance	Install height:4-6m Install horizontal spacing:15-20M	
Install diameter	Φ 76mm	
Certification	EMC LVD ROHS	
Packing size	42*42*20cm	1pc/CTN
Weight	6kg	
Warranty	3 years	



High efficient
monocrystal
solar panel



Green energy
no need
extra power



Smart
auto-control

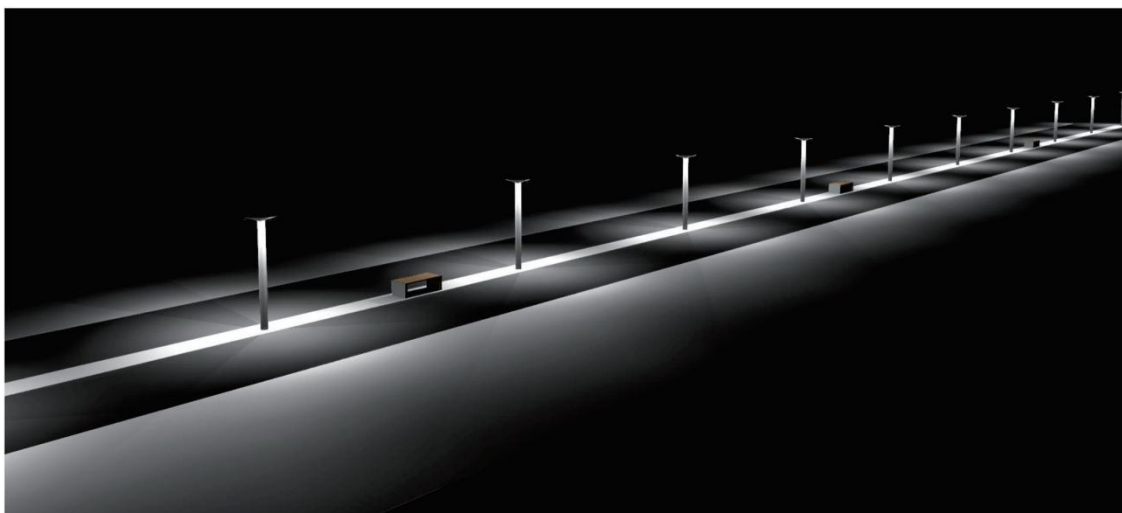
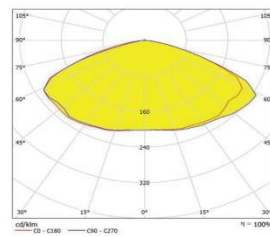
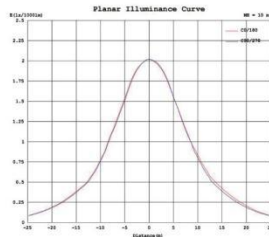
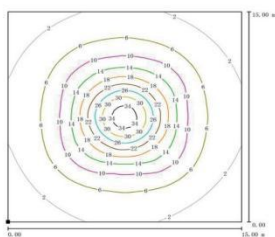
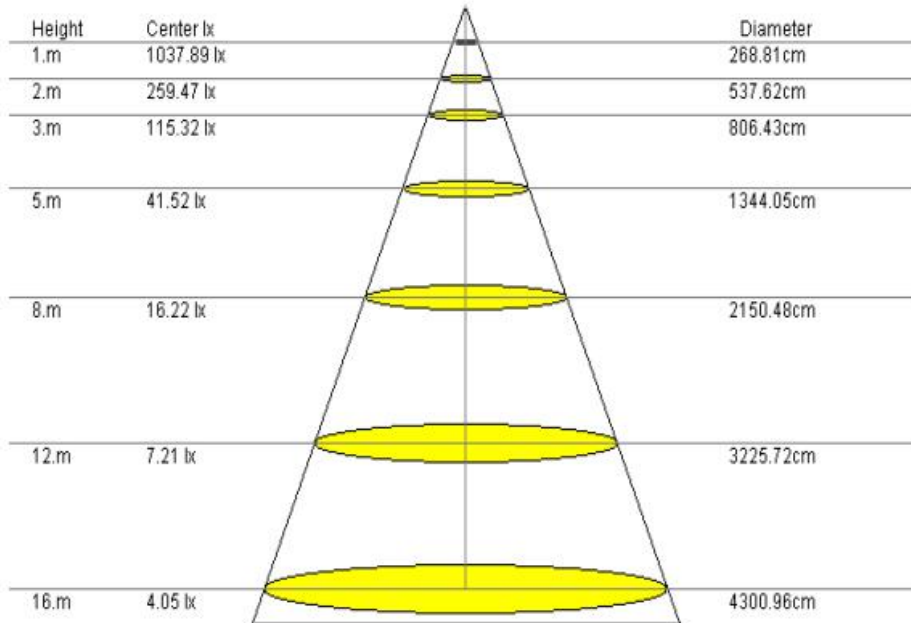


High bright
LED source



High capacity
li-ion battery for
energy storage

Testing data



- High efficient monocrystal solar panel
- Green energy no need extra power
- Smart auto-control
- High bright LED source
- High capacity li-ion battery for energy storage

Installation effect picture



Maintenance

1. Solar Photovoltaic Panel is the most important parts of the solar underground lamp which can last almost 25 years. But the dust or snow fall into the surface of the panel in long time may lead to low efficient of power generation. In this case, human clearance is recommended to keep the surface clean and without covering for the best working condition.
2. The built-in battery has small self-waste. In case of no use in long time, please put the lamp under sun light for charging to make sure the best condition.
3. The lamp controller is the essential with the functions of electronic control, light induction, time control, energy management, IR induction. Please keep it in dry during installation. Do not press or dismantle it. Any problem, please call the professional person to operate.
4. LED light source has long life. It is recommended to clean it and remove the dust to let the lamp work on the best condition each 2-3 years.

Please install the street light under the instruction of our professional person.

The installation may involve aerial work, please make sure the person has license to operate.

